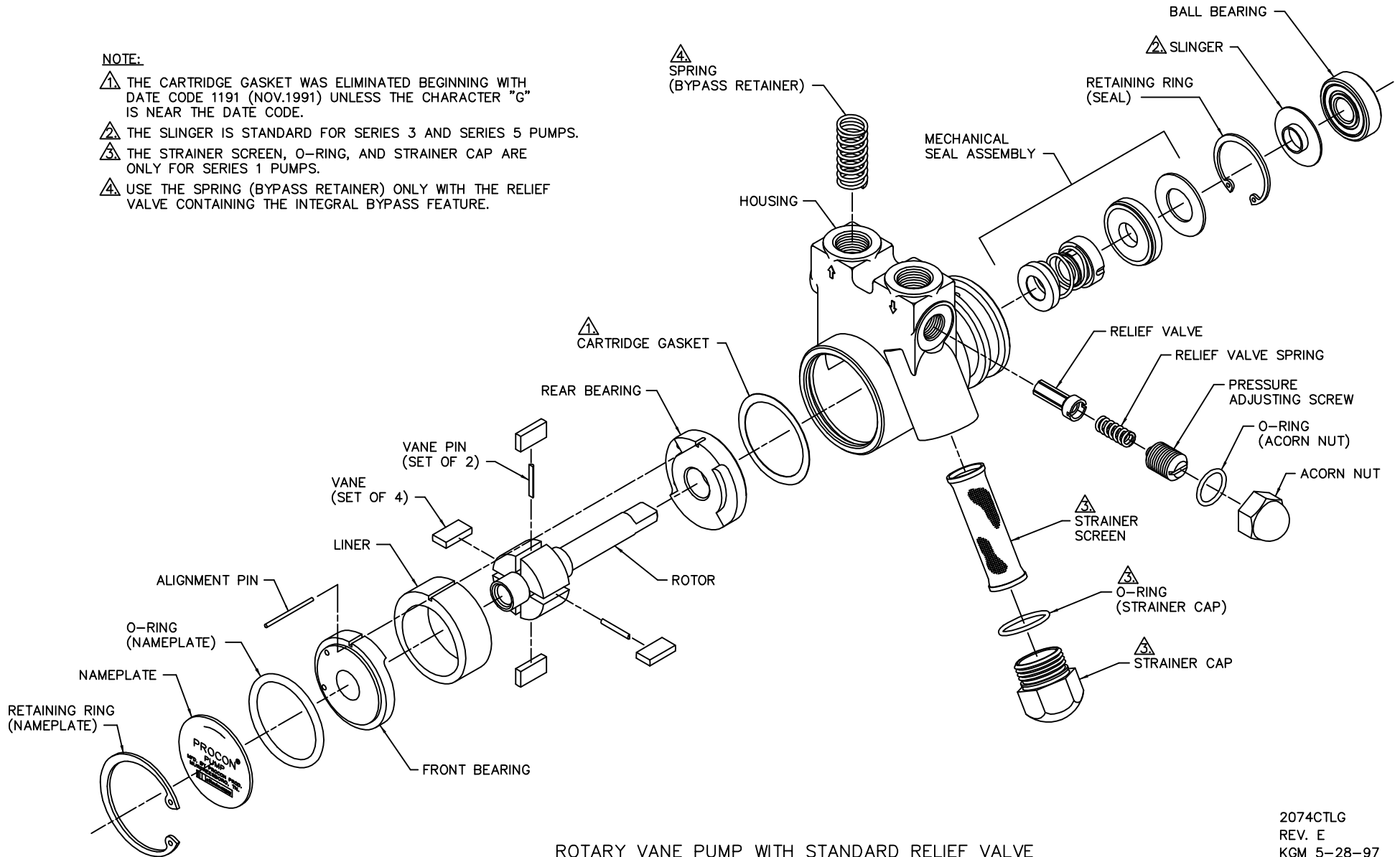


**NOTE:**

- ⚠ THE CARTRIDGE GASKET WAS ELIMINATED BEGINNING WITH DATE CODE 1191 (NOV.1991) UNLESS THE CHARACTER "G" IS NEAR THE DATE CODE.
- ⚠ THE SLINGER IS STANDARD FOR SERIES 3 AND SERIES 5 PUMPS.
- ⚠ THE STRAINER SCREEN, O-RING, AND STRAINER CAP ARE ONLY FOR SERIES 1 PUMPS.
- ⚠ USE THE SPRING (BYPASS RETAINER) ONLY WITH THE RELIEF VALVE CONTAINING THE INTEGRAL BYPASS FEATURE.



ROTARY VANE PUMP WITH STANDARD RELIEF VALVE  
(SERIES 1 SHOWN)

2074CTLG  
REV. E  
KGM 5-28-97