

BONNETS & GAUGES

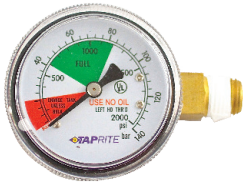
| MODEL # | DESCRIPTION | PK |
|-----------|--|----|
| 5605 | Pressure Gauge, 0-160 PSI, 1/4" NPT Bottom Inlet, Right Hand Threads | 10 |
| 624 | Pressure Gauge, 0-60 PSI, 1/4" NPT Bottom Inlet, Right Hand Threads | 10 |
| 6603 | Pressure Gauge, 0-3000 PSI, Right Inlet, 1/4" NPT, Left Hand Threads | 10 |
| 6603-2000 | Pressure Gauge, 0-2000 PSI, Right Inlet, 1/4" NPT, Left Hand Threads | 10 |
| 600GPS-01 | Gauge Protector Boot, Black Rubber | 10 |
| 744GP | Metal Gauge Guard for 2 Gauges, Black Powder Coat | 1 |
| 3740-2PA | Regulator Bonnet Assembly, Black Zinc, for 3700 Series Regulators | 1 |
| 740-2NPA | Regulator Bonnet Assembly for N ₂ Regulators | 1 |
| 740-601 | Regulator Bonnet Assembly, Polycarbonate, Gold Cap, for Secondary Regulators | 1 |
| 740-602 | Regulator Bonnet Assembly, Polycarbonate, Silver Cap, for Primary Regulators | 1 |
| 740-604 | Regulator Bonnet Assembly, Polycarbonate, Red Cap, for High Performance Primary Regulators | 1 |



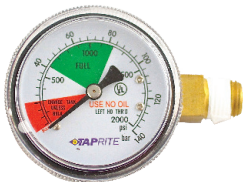
5605



624



6603



6603-2000



600GPS-01



744GP



740-604



740-2NPA

MOUNTING ACCESSORIES & HOSES

| MODEL # | DESCRIPTION | PK |
|-------------|--|----|
| 15-0017-60 | Regulator Mounting Panel, 11" x 8.5", Galvanized | 1 |
| 15-0018-60 | Regulator Mounting Panel, 16" x 8.5", Galvanized | 1 |
| 15-0019-60 | Regulator Mounting Panel, 21"x 8.5", Galvanized | 1 |
| 43-0006-00 | Regulator Mounting Kit with S/S Bracket, Bolt, & Washer | 1 |
| 7000-3A | High Pressure Hose Assembly, 3' Length, 1/4"Female Flare Swivel x CGA320 CO ₂ Fitting, Vinyl Cover | 1 |
| 7000-3ANIT | High Pressure Hose Assembly, 3' Length, 1/4"Female Flare x CGA580 N ₂ Fitting | 1 |
| 7000-3-2FL | High Pressure Hose Assembly, 3' Length, 1/4" Female Flare Swivel Fittings(2), Vinyl Cover | 1 |
| 7000-6A | High Pressure Hose Assembly, 6' Length, 1/4"Female Flare Swivel x CGA320 CO ₂ Fitting, Vinyl Cover | 1 |
| 7000-6ANIT | High Pressure Hose Assembly, 6' Length, 1/4"Female Flare x CGA580 N ₂ Fitting | 1 |
| 7000-6-2FL | High Pressure Hose Assembly, 6' Length, 1/4" Female Flare Swivel Fittings(2), Vinyl Cover | 1 |
| 7000-6EA-28 | High Pressure Hose Assembly, 6' Length, 1/4"Female Flare Swivel x Euro CO ₂ Fitting (28MM), Vinyl Cover | 1 |
| 7000-6EA-30 | High Pressure Hose Assembly, 6' Length, 1/4"Female Flare Swivel x Euro CO ₂ Fitting (30MM), Vinyl Cover | 1 |



15-0017-60



43-0006-00



7000-3A



440-18



440-19



740-18NB

TOOLS

| MODEL # | DESCRIPTION | PK |
|----------|--|----|
| 440-18 | Bonnet and CO ₂ Nut Wrench, 1 1/8" x 1 5/16" for Zinc Bonnet Regulators | 1 |
| 440-19 | Bonnet and CO ₂ Nut Wrench, 1 1/8" x 1 5/8" for Poly Bonnet Regulators | 1 |
| 740-18NB | CO ₂ Nut Wrench, 1 1/8" Hex, Offset, Closed End | 1 |

*See more tools in **Cleaning Kits & Accessories** Pg. 56



1600A



440-17R



1600CA



5460



1600C-250



665U



2406-11



6600A



440-13UD



6600CA

SHUT-OFFS & FITTINGS

| MODEL # | DESCRIPTION | PK |
|-----------|---|----|
| 1600A | Shut-off Valve, 1/4"NPT x 5/16" Hose Barb (for 5/16" ID Hose) | 1 |
| 1600CA | Shut-off Valve, 1/4"NPT x 5/16" Hose Barb, w/Check Valve | 1 |
| 1600C-250 | Shut-off Valve, 1/4"NPT x 1/4" Hose Barb, w/Check Valve (for 1/4" ID Hose) | 1 |
| 2406-11 | Tank Nipple Inlet O-Ring, .424ID x .103CS 70DURO | 10 |
| 440-13UD | Hex Nut for CO ₂ Tank Connection, CGA 320, 1-1/8" Hex | 1 |
| 440-17R | Flat Ring Seal for CO ₂ Inlet | 10 |
| 5460 | Y' Fitting Body, 1/4"NPT (Male) x (2) 1/4"NPT (Female), No Outlet Fittings | 1 |
| 665U | Hex Plug, 1/4" NPT, 9/16" Hex, Right-Hand Threads, for Secondary Regulators | 1 |
| 6600A | Shut-off Valve, 1/4"NPT x 1/4"Flare, No Check Valve | 1 |

CONTINUE TO NEXT PAGE

SHUT-OFFS & FITTINGS CONTINUED

| MODEL # | DESCRIPTION | PK |
|--------------|--|----|
| 6600CA | Shut-off Valve, 1/4" NPT x 1/4" Flare, w/Check Valve | 1 |
| 70030L-DB312 | Shut-off Valve, 1/4" NPT x 5/16" Barb, with Duckbill Check Valve (for 5/16" ID Hose) | 1 |
| 740-12 | CO ₂ Inlet Nipple with O-Ring Tank Seal, Left Hand Threads | 1 |
| 740-12N | N ₂ Inlet Nipple, CGA 580, with O-Ring Tank Seal, Left Hand Threads | 1 |
| 740-13N | N ₂ Tank Nut, CGA 580, Male Threads | 1 |
| 740-16 | 1/4" NPT Plug, Left Hand Threads, Allen Socket Head, for Primary Regulators | 1 |
| 740-19 | Regulator Nipple Assembly w/ Flat Ring Tank Seal, CGA320 CO ₂ Nut, Left-Hand Thread | 1 |
| 763 | Fiber Washer | 10 |
| 763D | Protective CO ₂ Washer, Red Delrin | 10 |



70030L-DB312



740-16



740-12



740-19



740-12N



763



740-13N



763D

Questions? Call us at 800-779-8488 for technical assistance