

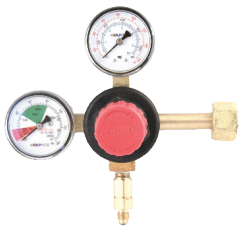
Taprite Regulators have the highest flow rate in the industry! Robust design delivers performance, reliability, and is unlikely to experience freeze up issues. Extremely durable and user friendly, polycarbonate bonnets make adjustments a snap! Pull the cap to adjust the pressure and push back to lock it in.



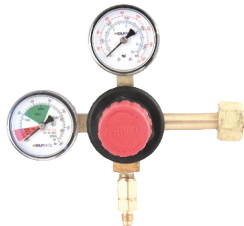
**3741**  
(Zinc Bonnet)



**3752**



**T5741PMHP**



**T5741PMHPB**

## PRIMARY REGULATORS

MODEL #	DESCRIPTION	PK
<b>3741</b>	1P x 1P, 160lb. & 2000lb. gauge, CO <sub>2</sub> tank fitting, 1/4" flare with check valve outlet, black zinc bonnet	<b>8</b>
<b>3741EN-01</b>	Primary Soda Regulator, 1P1P, Euro Inlet Fittings (30MM Nut), 1/4" Barb w/Check Outlet, 160lb & 2000lb Gauges	<b>8</b>
<b>3752</b>	2P x 2P, 160lb. & 2000lb. gauge, CO <sub>2</sub> tank fitting, 1/4" flare with check valve outlet, black zinc bonnet	<b>8</b>
<b>T5741PMHP</b>	1P X 1P, 160lb & 2000lb gauge, 1/4" flare with check valve, red cap	<b>8</b>
<b>T5741PMHPB</b>	1P X 1P, 160lb & 2000lb gauge, 1/4" flare with check valve, blue cap	<b>8</b>
<b>T5741PMHPBK</b>	1P X 1P, 160lb & 2000lb gauge, 1/4" flare with check valve, black cap	<b>8</b>

**CONTINUE**

### THE TAPRITE ADVANTAGE

- High CO<sub>2</sub> volumetric flow ensures product dispensing continuity while maintaining constant high flow of CO<sub>2</sub> as the tank discharges
- UL approved
- Polycarbonate bonnet eliminates tools for fast and accurate adjustments
- Service friendly - main components are accessible from the front for replacement
- 10 Micron Filter at the inlet port to keep contaminants out of the regulator
- Fewer parts to manage

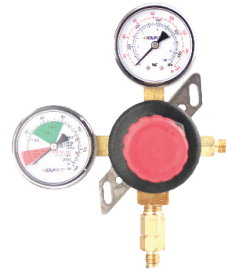
Questions? Contact us at [sales@taprite.com](mailto:sales@taprite.com)

## PRIMARY REGULATORS CONTINUED

MODEL #	DESCRIPTION	PK
T5741PMHPT	Primary Beer Regulator, 1P1P, High Pressure, CGA320 Inlet, 5/16" Barb Shut-off Outlet w/Check, 160lb and 2000lb Gauges, Red Cap	8
T5741PMHPBK-01	Primary Soda Regulator, 1P1P, CGA320 Inlet, 1/4" Barb Shut-off w/Check, 160lb and 2000lb Gauges, Black Bonnet	8
T5745HPBK	1P X 5P, 160lb & 2000lb gauge, (5) X 1/4" flare with check valve (vertical manifold), red cap	8
T5752HP-02	2P x 2P, 160LB & 2000LB gauge, 1/4" flare with check valve, red cap	8



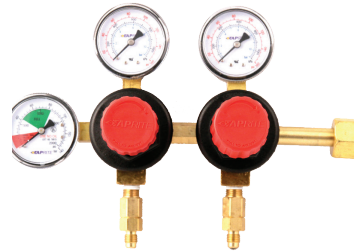
T5741PMHPBK



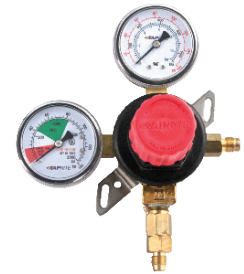
T5741WMHP-6

## WALL MOUNT REGULATORS

MODEL #	DESCRIPTION	PK
T5741WMHP	1P X 1P, 160lb & 2000lb gauge, 1/4" flare inlet, 1/4" flare with check valve, red cap	8
T5741WMHP-3	1P X 1P, 160lb & 2000lb gauge, 1/4" flare inlet, 1/4" flare with check valve, red cap, 3 foot hose with CO <sub>2</sub> tank fitting	1
T5741WMHP-6	1P X 1P, 160lb & 2000lb gauge, 1/4" flare inlet, 1/4" flare with check, red cap, 6 foot hose with CO <sub>2</sub> tank fitting	1
T8861-6B	2P X 2P, ual body primary regulator, wall mount with 6 ft. hose, blue poly bonnet	1



T5752HP-02



T5741WMHP



T8861-6B

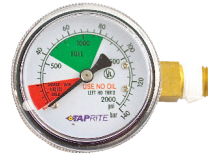


# 84

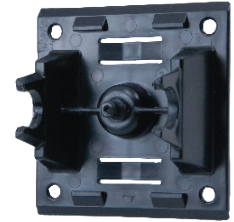
# REGULATOR PARTS & ACCESSORIES

## GAUGE MOUNTING/PARTS AND PROTECTION

MODEL #	DESCRIPTION	PK
08-1080-00	Plastic glide bracket for regulator	1
43-0006-00	Metal bracket kit contains stainless steel bracket, bolt and lock wash	1
600GPS-01	Gauge protection boot for use with primary or secondary regulator guages	10
744GP	Metal regulator gauge protector painted black (1-piece, welded)	1
2406-11	Tank Nipple Inlet O-Ring, .424ID x .103CS 70DURO	25
440-17R	Flat Ring Seal for CO <sub>2</sub> Inlet	25
440-18	Bonnet and CO <sub>2</sub> Nut Wrench, 1 1/8" x 1 5/16" for Zinc Bonnet Regulators	1
440-19	Bonnet and CO <sub>2</sub> Nut Wrench, 1 1/8" x 1 5/8" for Poly Bonnet Regulators	1
740-28-30	CO <sub>2</sub> Nut Wrench for 28MM and 30MM Tank Fittings	1



6603-2000



08-1080-00



744GP



600GPS-01

## REPAIR KITS

MODEL #	DESCRIPTION	PK
3740-17	Regulator Repair Kit for 3700 Series CO <sub>2</sub> Regulators, with Diaphragm, Capsule, and O-Ring Tank Seal	1
7740-15	Regulator Repair Kit for 2" Diaphragm, CO <sub>2</sub> Regulators, with Diaphragm, Capsule, and Flat Tank Seal	1



1690-3S



7740-15



43-0006-00



1690-2N-1



5602



624



5605



624-1



6603



740-28-30