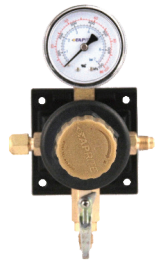
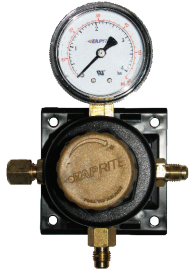


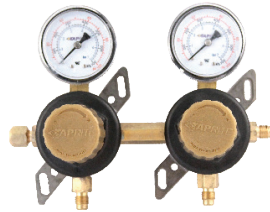
T5261SN



T5261ST



T5261SN60



T5272SN



T5261SNBK



T5272SNG



T5261SND

MODEL #	DESCRIPTION	PK
T5261SN	1P X 1P, 100lb gauge, 1/4" flare inlet, 1/4" flare check valve outlet, gold cap	8
T5261SN60	1P X 1P, 60lb gauge, 1/4" flare inlet, 1/4" flare check valve outlet, gold cap	8
T5261SNBK	1P X 1P, 100lb gauge, 1/4" flare inlet, 1/4" flare with check valve out, black cap	8
T5261SNBL	1P x 1P, 100lb gauge, 1/4" flare inlet/thru, 1/4" flare with check valve outlet, blue cap	8
T5261SND	1P X 1P, 30lb gauge, 1/4" flare inlet, 1/4" flare with check valve outlet, gold cap	8
T5261ST	1P X 1P, 100lb gauge, 1/4" flare inlet, 1/4" flare with shutoff outlet, gold cap	8
T5272SN	2P X 2P, 100lb gauge, 1/4" flare inlet/out, 1/4" flare with check valve outlet, metal brackets, gold cap	1
T5272SNG	2P X 2P, 100lb gauge, 1/4" flare inlet/thru, 1/4" flare with check valve outlet, glide brackets, gold cap	8
T5272SN-375	2P X 2P, 160lb gauge, 3/8" flare outlet, 1/4" flare check valve outlet, gold cap	8
T5276SND	2P X 2P, 100lb & 30lb gauges, 1/4" barb inlet/outlet + vertical manifold (4 barbs+ 1 flare), metal brackets, gold cap	8

GAUGES

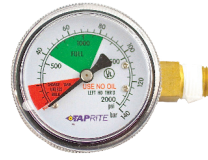
MODEL #	DESCRIPTION	PK
5602	0-30 PSI, 1/4" NPT, right hand thread	10
5603	0-3000 PSI, 1/4" NPT, right hand thread	10
5605	0-160 PSI, 1/4" NPT, right hand thread	10
624	0-60 PSI, 1/4" NPT, right hand thread	10
624-1	0-60 PSI, 1/4" NPT, right hand thread	10
6603	Gauge 0-3000 PSI, 1/4" NPT, left hand thread	10
6603-2000	Gauge 0-2000 PSI, 1/4" NPT, left hand thread	10

84

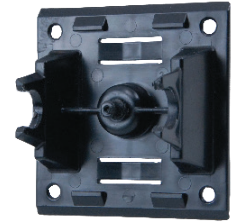
REGULATOR PARTS & ACCESSORIES

GAUGE MOUNTING/PARTS AND PROTECTION

MODEL #	DESCRIPTION	PK
08-1080-00	Plastic glide bracket for regulator	1
43-0006-00	Metal bracket kit contains stainless steel bracket, bolt and lock wash	1
600GPS-01	Gauge protection boot for use with primary or secondary regulator guages	10
744GP	Metal regulator gauge protector painted black (1-piece, welded)	1
2406-11	Tank Nipple Inlet O-Ring, .424ID x .103CS 70DURO	25
440-17R	Flat Ring Seal for CO ₂ Inlet	25
440-18	Bonnet and CO ₂ Nut Wrench, 1 1/8" x 1 5/16" for Zinc Bonnet Regulators	1
440-19	Bonnet and CO ₂ Nut Wrench, 1 1/8" x 1 5/8" for Poly Bonnet Regulators	1
740-28-30	CO ₂ Nut Wrench for 28MM and 30MM Tank Fittings	1



6603-2000



08-1080-00



744GP



600GPS-01

REPAIR KITS

MODEL #	DESCRIPTION	PK
3740-17	Regulator Repair Kit for 3700 Series CO ₂ Regulators, with Diaphragm, Capsule, and O-Ring Tank Seal	1
7740-15	Regulator Repair Kit for 2" Diaphragm, CO ₂ Regulators, with Diaphragm, Capsule, and Flat Tank Seal	1



1690-3S



7740-15



43-0006-00



1690-2N-1



5602



624



5605



624-1



6603



740-28-30