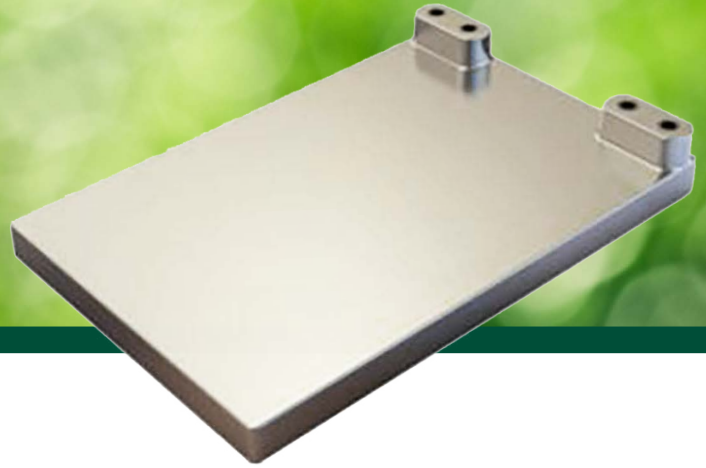
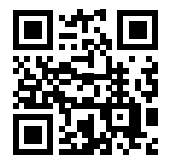


Miscellaneous



Apex offers a full line of high quality cleaners, sanitizers, brix cups, lubricants, tools, pre-mix product tanks, cold plates and miscellaneous parts for beverage dispensing systems.



DISPENSING *Refreshing* RESULTS



CLEANING AND SANITIZING

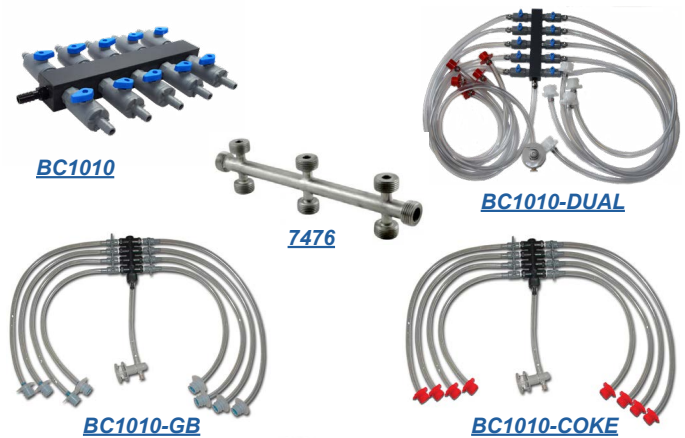
Cleaners and Sanitizers

Part Number	Description
1110014	KAY 5 Sanitizer 1 Oz Pkt 200/Case
300120225	TM Desana Max IC Beverage Line Cleaner 1.9 Oz
6101141	Pathways Beverage Drain Control 64 oz
B06-0011	Liquid Desana Max Line Cleaner 1 Gallon
ACT222	Draftec Beer Line Cleaner Clear, 32 Oz Bottle
ACT222-55	Draftec Beer Line Cleaner Clear, 55 Gallon Drum
ACT222B	Draftec Beer Line Cleaner Blue, 32 Oz Bottle
ACT222B-55	Draftec Beer Line Cleaner Blue, 55 Gallon Drum
ACT444R	Draftec Acid Line Cleaner Red, 32 Oz Bottle
ACT444R-55	Draftec Acid Line Cleaner Red, 55 Gallon Drum
B06-0011	Liquid Desana Max Line Cleaner 1 Gallon



Cleaning Manifolds

Part Number	Description
BC1010	BevClean Flush Manifold 10 Product With Shut-Offs
BC1010-GB	BevClean Flush Manifold 10 Product Complete, GB QCDII Adapters
BC1010-DUAL	BevClean Flush Manifold 10 Product Complete, GB QCDII And Coke Adapters
BC1000-COKE	BevClean Flush Manifold 10 Product Complete, Coke Adapters
BC1000-PC	BevClean Flush Manifold 10 Product Complete, Pepsi Encore Adapters
7476	Stainless Steel 8-Way Beer Cleaning Manifold Straight



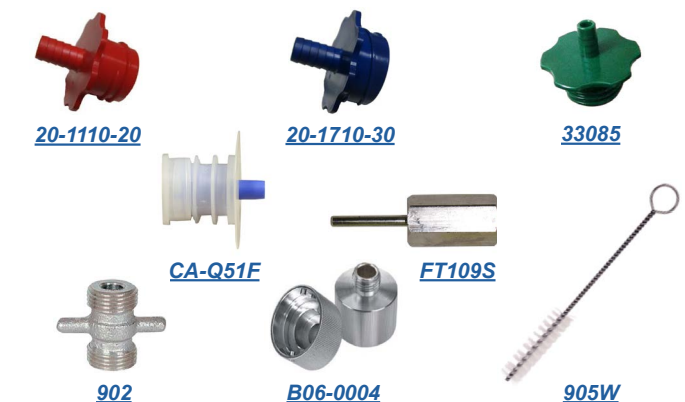
Cleaning Pumps

Part Number	Description
CPCCK904	Complete Hand Pump Cleaning Kit with 32 oz Cleaning Liquid
8005-913-289	Electric Pump For Beer Line Cleaning



Cleaning Accessories

Part Number	Description
20-1110-20	Adapter BIB CC Sanitizer
20-1710-30	Adapter BIB Scholle Sanitizer
33085	Encore Pepsi Sanitizing Adapter Green Plastic 3/8 Barb
CA-Q51F	Flush Adapter QCDII
FT109S	Double Flusher
902	Duplex Coupling
B06-0004	Sankey Cleaning Adapter Chrome Plated Brass
905W	Faucet Brush Standard 3/4"

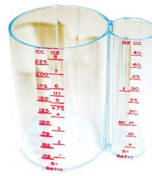




BRIX AND RATIO

Ratio Cups

Part Number	Description
1092	Ratio Cup 5:1 And 2:11 Through 11:1 Flomatic
99-9426	Ratio Cup 5:1 And 5.5:1 Coke
99-9012	Ratio Cup 5:1 And 5.5:1 McCann's
99-9440	Ratio Cup Pepsi HY 5 Chamber
99-5509	Ratio Cup 5:1 McCann's



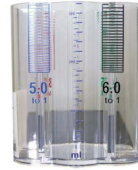
[1092](#)



[99-9426](#)



[99-9012](#)



[99-9440](#)



[99-5509](#)

Syrup Separators

Part Number	Description
49796	Syrup Separator Brix Nozzle FF
316-0010	Syrup Separator Post-Mix Valve
1089-00	Syrup Separator S-Tube Flomatic
319540000	Syrup Separator S-Tube UF1 / SF1
54-0031/04-SP	Syrup Separator LEV And GMV Valve 3.0 Oz
54-0201/03-SP	Syrup Separator GMV 4.5
82-3457	Syrup Separator Kit Flavor Select Nozzle
316-0004	Syrup Separator for Rattler Bargun



[49796](#)



[316-0010](#)



[1089-00](#)



[319540000](#)



[54-0031/04-SP](#)



[54-0201/03-SP](#)



[82-3457](#)



[316-0004](#)

Refractometer

Part Number	Description
RHB-32	Refractometer, Brix 0-32%



[RHB-32](#)



[300NSF/B](#)



[54-0007/02](#)

Thermometer

Part Number	Description
300NSF/B	Thermometer LED Digital Pocket

Carbonation Tester

Part Number	Description
54-0007/02	Carbonation Tester Assembly

Accu-Pour Pitcher

Part Number	Description
80741	Accu-Pour Pitcher 128 Oz 4000 ML



[80741](#)

LUBRICANTS

Lubricants and Sealant

Part Number	Description
46	Food Grade Lubricant 1 Oz Tube
HLFT	Food Grade Lubricant 4 Oz Tube
104S	Silicone Grease 1 Oz Tube



[46](#)



[HLFT](#)



[104S](#)



PRE-MIX

Product Tank

Part Number	Description
15C07-124	Product Tank 5 Gallon Ball Lock, 304SS Body, Single Steel Handle, Rubber Boot Bottom, Manual Pressure Relief Built Into Lid
CC454-B	Tank O-Ring CC Black
GB111-B	Tank Plug O-Ring GB Black



[15C07-124](#)



[CC454-B](#)



[GB111-B](#)

Pre-Mix Disconnects

Part Number	Description
21-1102-27	Pre-Mix Disconnect Gas 1/4 Barb Long CC
21-1102-29	Pre-Mix Disconnect Liquid 1/4 Barb Long CC
27-1102-77	Pre-Mix Disconnect Gas 1/4 Barb Gray
27-1102-99	Pre-Mix Disconnect Liquid 1/4 Barb Black
27-1103-99	Ball Lock Disconnect Liquid 3/8 Barb Black



[21-1102-27](#)



[21-1102-29](#)



[27-1102-77](#)



[27-1102-99](#)



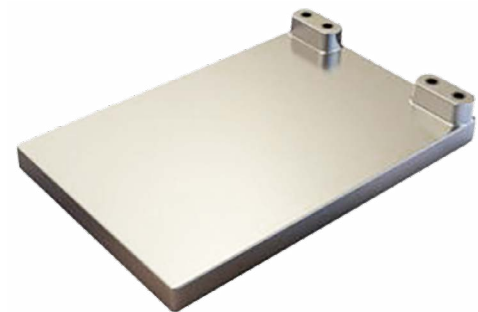
[27-1103-99](#)

COLD PLATES

Cold Plates

Part Number	Description
8X12-2	Cold Plate 8" x 12" 2 Circuit
8X14-2	Cold Plate 8" x 14" 2 Circuit
8X14-4	Cold Plate 8" x 14" 4 Circuit
8X14-5	Cold Plate 8" x 14" 5 Circuit
8X14-7	Cold Plate 8" x 14" 7 Circuit

Other options are available.
Please visit www.totalapex.com or call for details.



All cold plates include 5/16" MF x 1/4" barb fittings



TOOLS

Wrenches

Part Number	Description
CFT87	Standard Faucet Wrench Heavy Duty With Vinyl Grip
516797	Wrench CO2 Offset



[CFT87](#)



[516797](#)

Tubing Tools

Part Number	Description
959-01000-00	Kuri Snip Cutter, up to 1/2"
951-01000-01	Bundle Tubing Slicer
T04-0004	Tubing Cutter, Plastic Silver
T04-0005	Replacement Blade For T04-0004 Tubing Cutter 5/Pk
958-01000-00	Medium Bundle and Hose Cutter
957-01000-00	Bundle Cutter Ratchet Style
954-01000-00	Standard Bundle Tubing Cutter
T04-0001	Side Jaw Ear Clamp Pliers
T04-0002	Standard Jaw Ear Clamp Pliers
29	Vice Grip Pinch Off



[959-01000-00](#)
Kuri Snip Cutter
(up to 1/2")



[951-01000-00](#)
Bundle Tubing Slicer



[958-01000-00](#)
Medium Bundle Cutter
(up to 1-5/8")



[T04-0004](#)
Tubing/Hose Cutter



[954-01000-00](#)
Large Bundle Cutter
(up to 1-7/8")



[957-01000-00](#)
Jumbo Bundle Cutter
(up to 2-1/2")

Bargun Tools

Part Number	Description
PH10-112	Stem Seal O-Ring Insertion/Extraction Tool
316-0003	Brass O-Ring Insertion/Extraction Tool for Rattler and Schroeder Barguns
316-0005	Shut-Off Tool for Rattler Juice Barguns



[29](#)
Vice Grip
Pinch-Off Tool



[T04-0001](#)
Side Jaw Pincers



[PH10-112](#)



[T04-0002](#)
Standard Jaw Pincers



[316-0003](#)



[316-0005](#)

DRAIN FIXTURE

TRU-GAP

Part Number	Description
925340	Tru-Gap PVC Air Gap Fixture with SS Hardware, Install Up To Three Drain Lines To One Tru-Gap Fixture, Connects to a Standard 2" PVC Pipe, With Reducer Can Be Adapted To Smaller Or Larger Pipes



[925340 Kit](#)



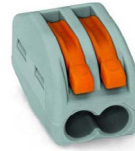
[925340 Assembled](#)



ELECTRICAL PARTS

Connectors

Part Number	Description
222-412	Wago Splicing Connector 2-Conductor
222-413	Wago Splicing Connector 3-Conductor
222-415	Wago Splicing Connector 5-Conductor



[222-412](#)



[222-413](#)



[222-415](#)

Starter

Part Number	Description
F03-0001	Starter 14 15 20W with Condenser FS-2

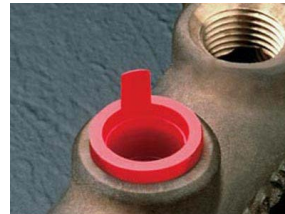


[F03-0001](#)

CAPS AND CLOSURES

Caps and Closures

Part Number	Description
L-3	Lift-Tab Tapered Plugs, 0.427" OD at Top of Taper
L-4	Lift-Tab Tapered Plugs, 0.485" OD at Top of Taper
L-5	Lift-Tab Tapered Plugs, 0.547" OD at Top of Taper
T-4X	Red Cap T-4X
A300A11A	PVC Black Cap, 0.375" ID, 0.500" Long
VC-250-8	PVC Red Cap, 0.250" ID, 0.500" Long



[L-3](#), [L-4](#), [L-5](#)



[T-4X](#)

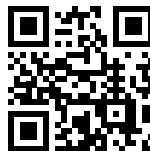


[A300A11A](#)



[VC-250-8](#)

Many other products are available on our website.



If you don't see what you need, please visit www.totalapex.com or call us at 877.901.APEX (2739).



DISPENSING *Refreshing* **RESULTS**